

National Trends in Adult Parole Populations

Little Hoover Commission

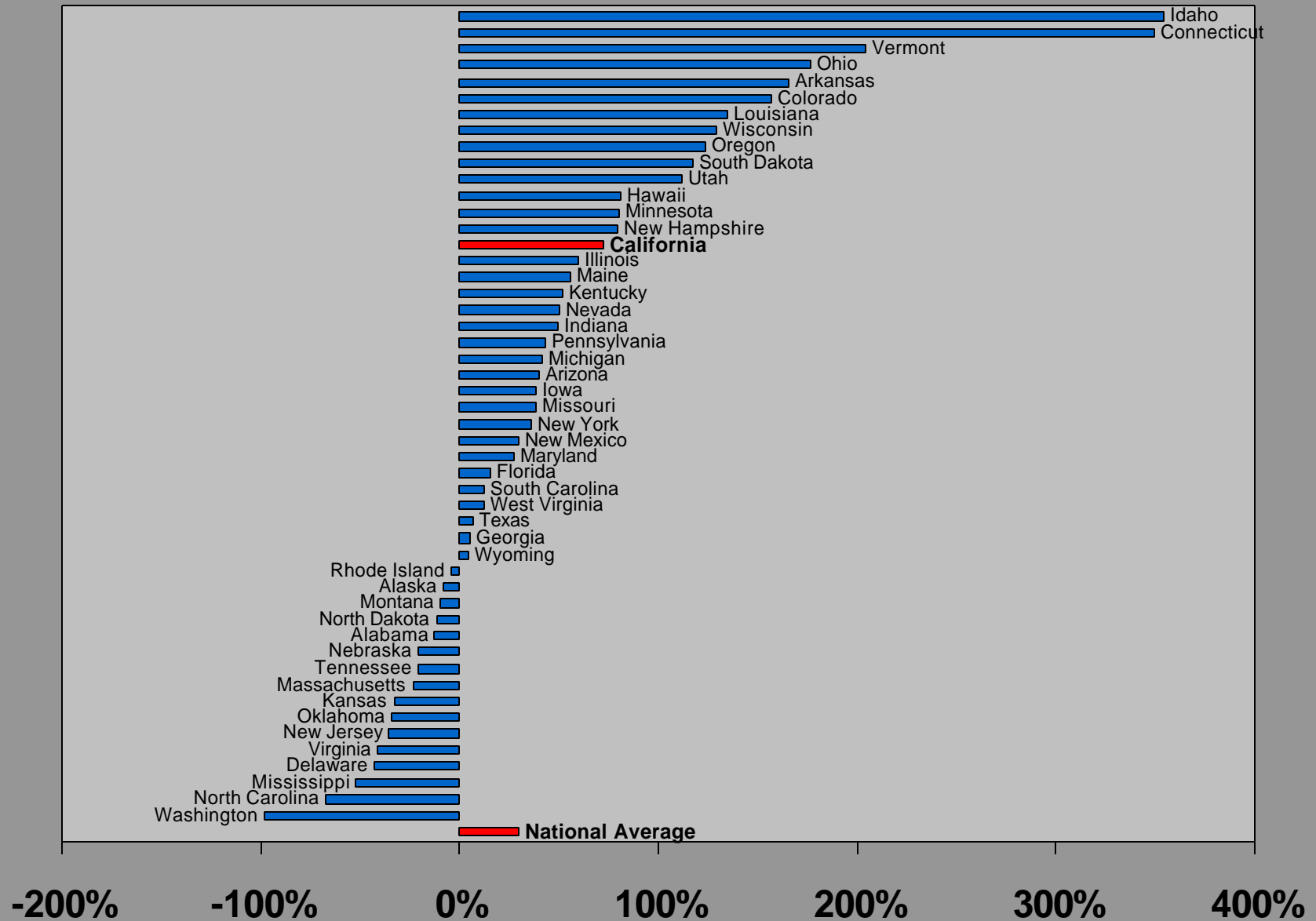
Michael Jacobson, Ph.D.

John Jay College of Criminal Justice

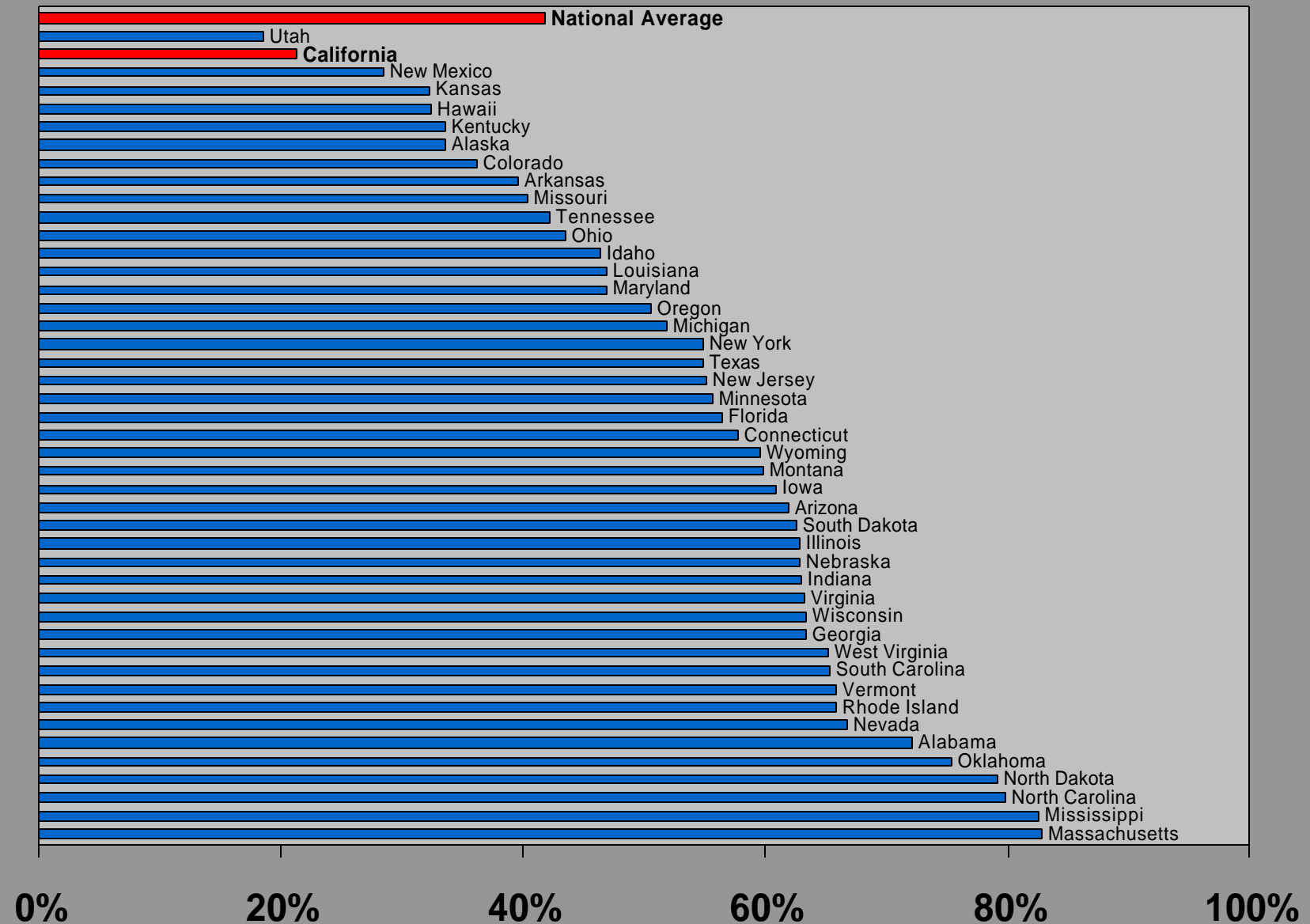
Public Hearing on Parole Reform

January 23, 2003

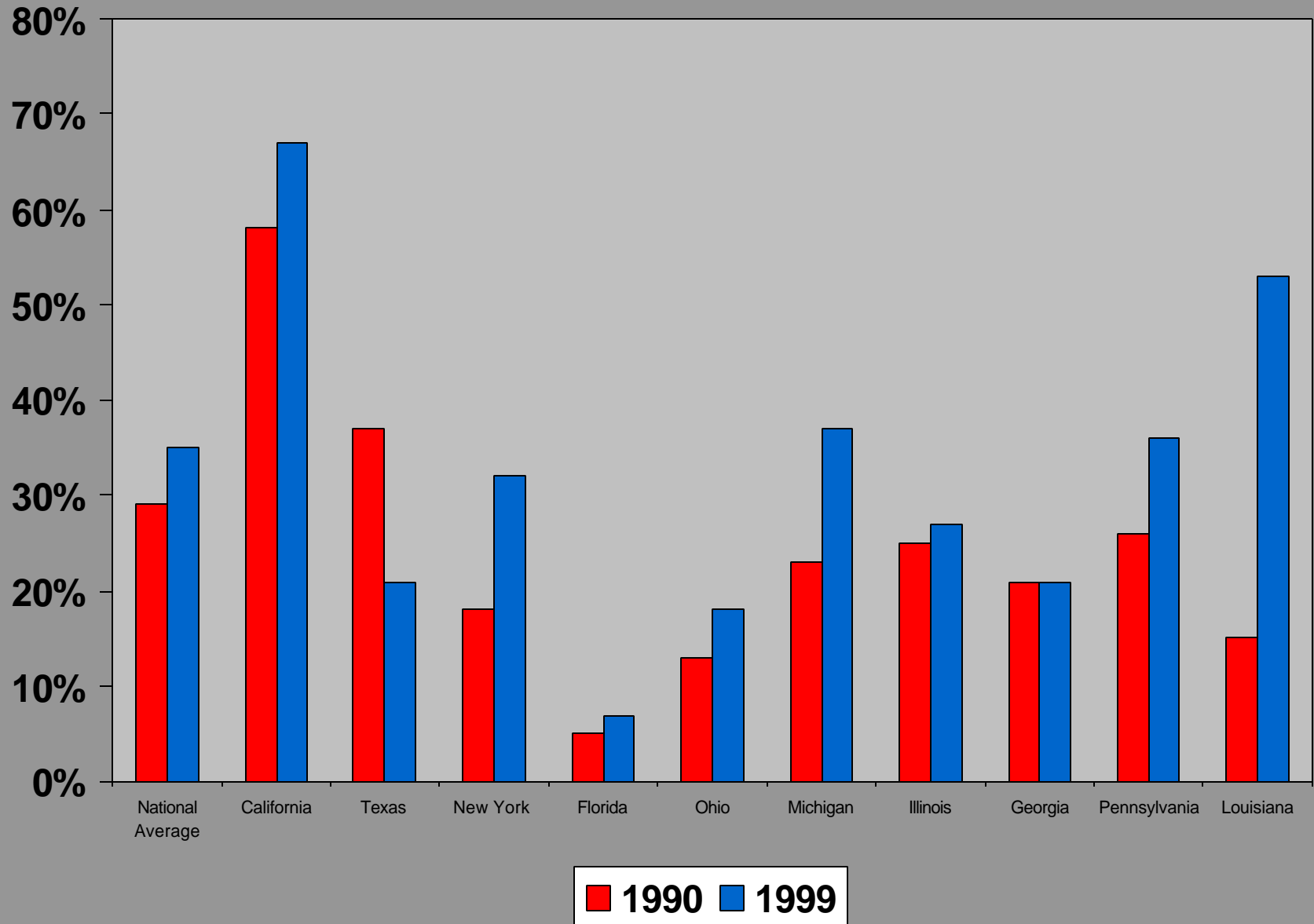
Percent Change in Adults on Parole, 1990-2000



Percentage Successful Among Parole Discharges, 1999



Percent of Parole Violators Among Admissions to State Prisons, Ten Largest Jurisdictions, 1990-1999



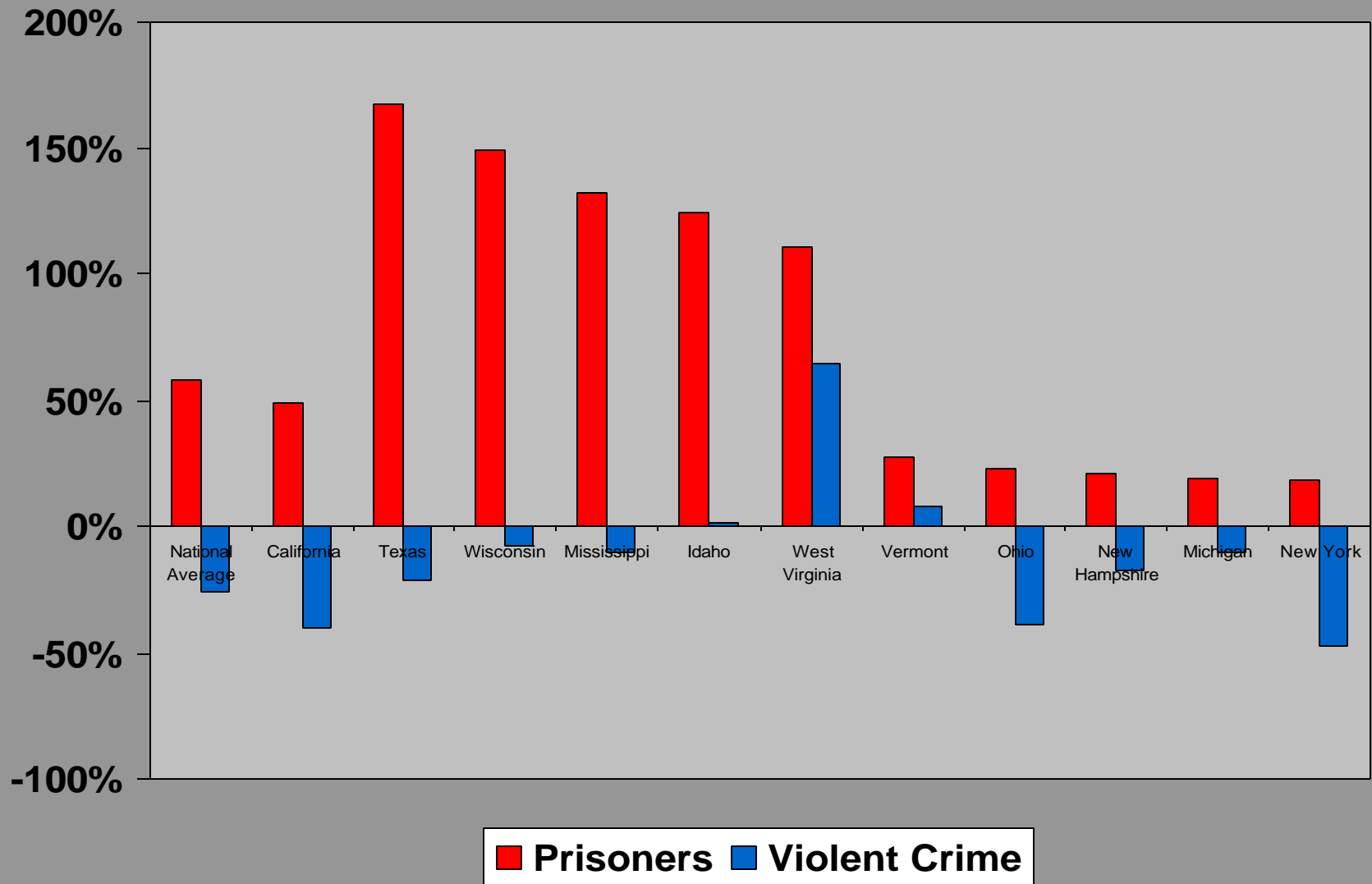
Percent of Total Admissions that are Technical Parole Violators, Selected States,
2001

	Number of Technical Parole Violators Entering Prison	Percent of Parole Caseload Technically Violated	Percent of Admissions that are Technical Parole Violators
California	73,352	62%	55%
Texas	2,352	2%	7%
New York	6,200	11%	24%
Florida	1,625	27%	6%
Michigan	3,160	20%	33%
Illinois	2,180	7%	8%
Pennsylvania	1,960	2%	17%
Arizona*	1,322	39%	23%
Colorado	1,798	31%	21%
Kansas	2,661	52%	44%
Minnesota	1,307	41%	29%
Iowa	* 904	33%	39%
South Car.	784	18%	11%

Prevalence of Mental Illness, Drug Use, and Alcohol Abuse Among Released Parolees, 1999

<i>Characteristic</i>	<i>Percent of Expected Releases</i>
Alcohol or Drug Involved at time of Offense	83.9%
Alcohol Abuse	
Alcohol use at time of offense	41.5%
Alcohol Dependant	24.9%
Drug Use	
Drug use in month before offense	58.8%
At time or offense	45.3%
Intravenous use in the past	24.8%
Committed offense for money for drugs	20.9%
Mentally Ill	14.3%
Homeless	11.6%

Percent Change in Violent Crime and Prisoners in Custody of State Correctional Authorities 1990 to 1999*



*States with highest and lowest percent increase in prisoners